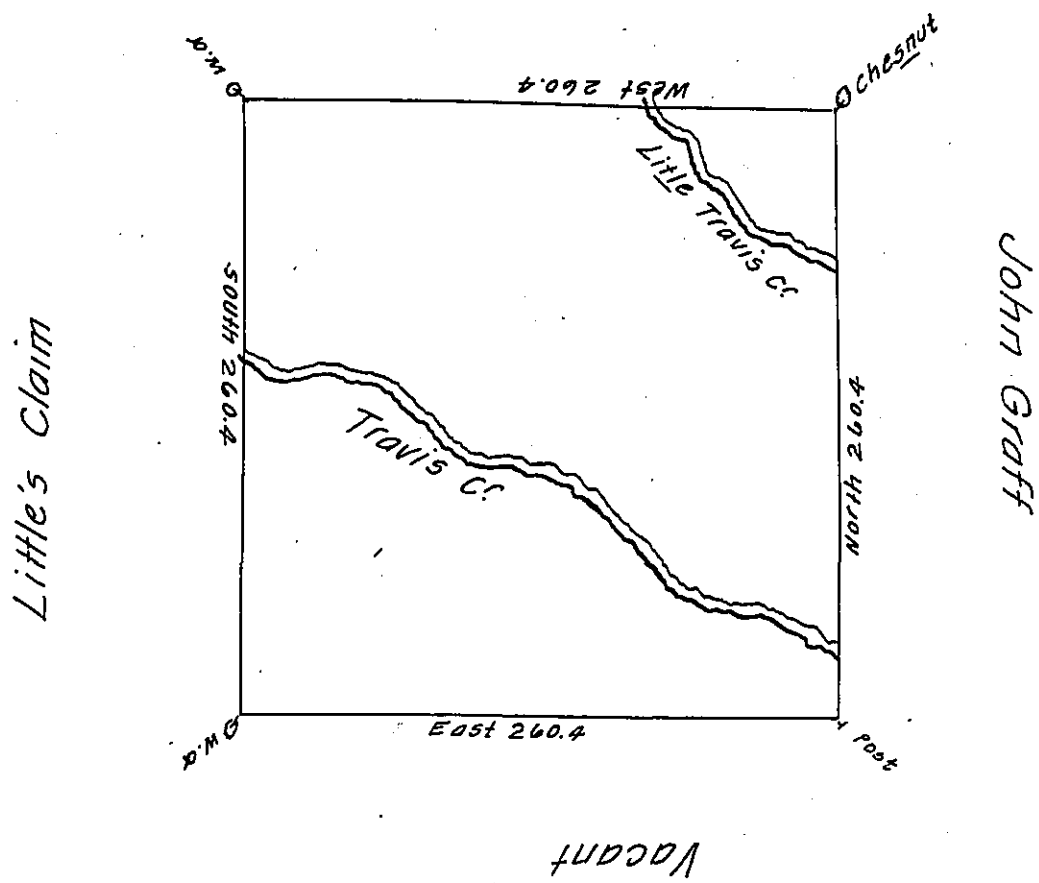


George Graff



The above is a Draught of a Survey made 3^d Dec^r. 1784. In pursuance
of a Warrant dated Sept 22^d. 1784 Granted to George Musser. Situate
in Washington County. Containing 400 Ac^s with 6th Cent. Allowance for
Roads &c. called Rural Swain

David Redick D.S.

John Lukens Esq^r S.G!

IN TESTIMONY that the above is a copy of the original remaining on file in
the Department of Internal Affairs of Pennsylvania, made
conformably to an Act of Assembly approved the 16th day of
February, 1833, I have hereunto set my Hand and caused
the Seal of said Department to be affixed at Harrisburg,
this first day of April 1908.

Henry Howell
Secretary of Internal Affairs.